

# 2021 State Fair Photography Judging

## Class 1 Mountains



1



2



3



4

Select class

- Class 1 – Mountains
- Class 2 – Rocks
- Class 3 – Children
- Class 4 – Sunflowers
- Class 5 – Farm Animals
- Class 6 – Black & White
- Intermediate Problem
- Senior Problem

Place this class of four photos in order of best to worst. Click on a photo for a full screen view, click on the large image to return to this page. Write your placing down on paper then **click the button to see official placing and reasons**







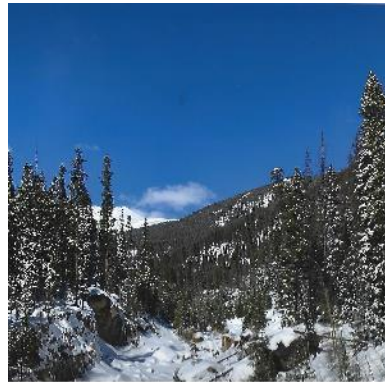


# Class 1 - Mountains

Placing 1 – 4 – 2 – 3 .

v v v

Cuts 3 5 3 .



#1

Good leading lines  
Good color  
Good rule of thirds  
Good focus

#4

Good color contrast  
Good rule of thirds  
Good focus  
Negative space w/sky  
Middle 3<sup>rd</sup> of photo is  
to monotone

#2

Good color  
Stream too centered  
Too much negative  
space on rt.  
Soft focus

#3

Nice sky  
Good rule of thirds  
Too much negative  
space at the bottom  
Lighting too flat & not  
enough contrast

# 2021 State Fair Photography Judging

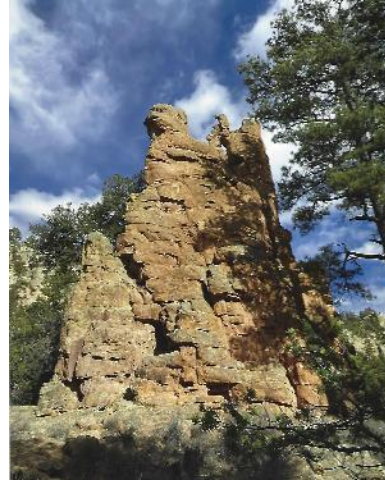
## Class 2 Rocks



1



2



3



4

Select class

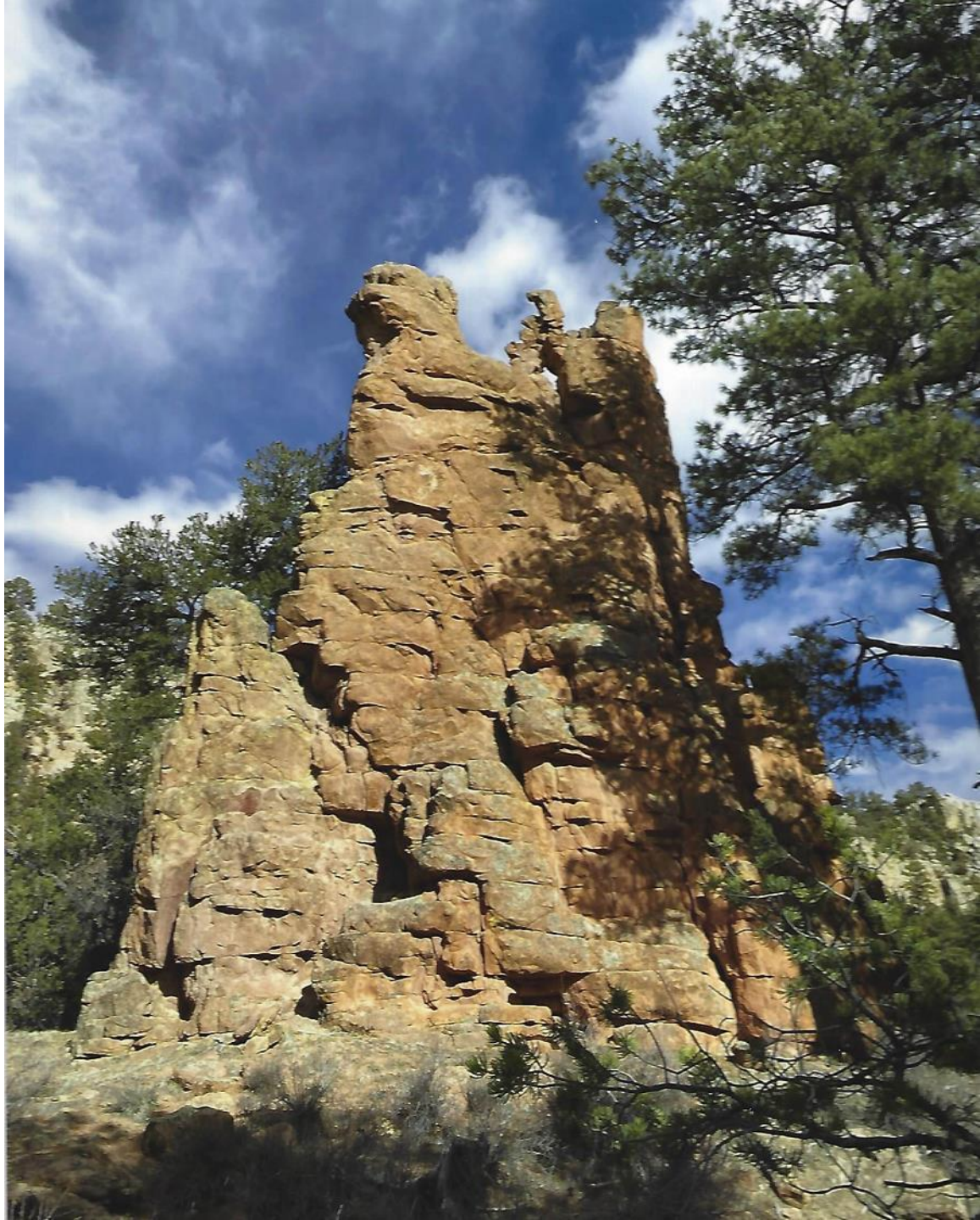
- Class 1 – Mountains
- Class 2 – Rocks
- Class 3 – Children
- Class 4 – Sunflowers
- Class 5 – Farm Animals
- Class 6 – Black & White
- Intermediate Problem
- Senior Problem

Place this class of four photos in order of best to worst. Click on a photo for a full screen view, click on the large image to return to this page. Write your placing down on paper then **click the button to see official placing and reasons**









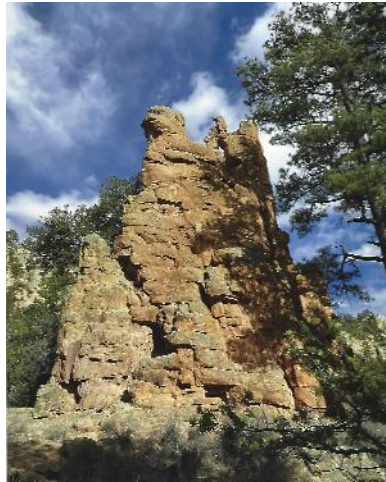


# Class 2 - Rocks

Placing 4 – 3 – 1 – 2 .

v v v

Cuts 4 2 3 .



#4

Good color contrast  
Good exposure  
Good rule of thirds  
Good Texture  
Sharp focus  
Nice framing

#3

Good color contrast  
Good focus  
Good framing with tree  
Clouds add interest  
Busy, lots of different textures  
Subject too centered

#1

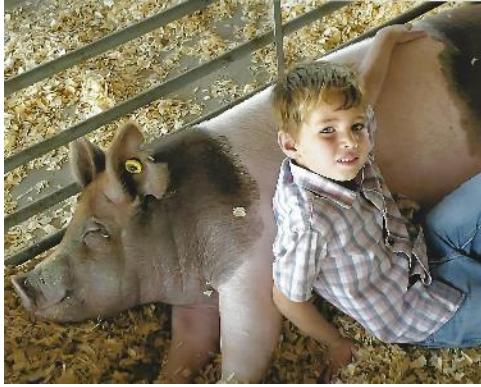
Good focus  
Good color & contrast  
Background clutter  
Losses focus towards back of photo

#2

Good framing  
Nice color  
Under exposed – Flat  
Depth of field lacking

# 2021 State Fair Photography Judging

## Class 3 Children



1



2



3



4

Select class

- Class 1 – Mountains
- Class 2 – Rocks
- Class 3 – Children
- Class 4 – Sunflowers
- Class 5 – Farm Animals
- Class 6 – Black & White
- Intermediate Problem
- Senior Problem

Place this class of four photos in order of best to worst. Click on a photo for a full screen view, click on the large image to return to this page. Write your placing down on paper then **click the button to see official placing and reasons**











# Class 3 - Children

Placing 2 – 4 – 3 – 1 .

v v v

Cuts 3 4 3 .



#2

Good lighting  
Good composition  
Good focus on subject  
Good depth of field  
Good rule of thirds

#4

Sharp focus  
Catch light in eyes-good  
Nice composition  
Good angle  
Little too crowded in photo

#3

Depth of field is good  
Good focus  
Subject looking out of photo  
Edge mergers of hand & feet

#1

Composition good  
Good rule of thirds  
Heavy pixilation  
Soft focus

# 2021 State Fair Photography Judging

## Class 4 Sunflowers



1



2



3



4

Select class

Class 1 – Mountains

Class 2 – Rocks

Class 3 – Children

Class 4 – Sunflowers

Class 5 – Farm Animals

Class 6 – Black & White

Intermediate Problem

Senior Problem

Place this class of four photos in order of best to worst. Click on a photo for a full screen view, click on the large image to return to this page. Write your placing down on paper then **click the button to see official placing and reasons**







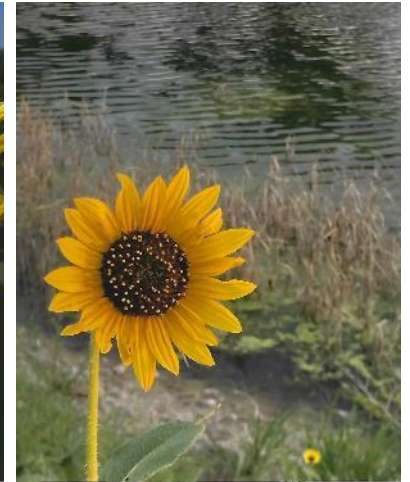


# Class 4 - Sunflowers

Placing 1 – 2 – 3 – 4 .

v v v

Cuts 3 1 6 .



#1

Good focus  
Good rule of thirds  
Good contrast  
Shallow depth of field/  
background out of  
focus. Edge merger

#2

Good color  
Good focus  
Background distracts  
Too large of depth of  
field  
Edge merger on top

#3

Fills the frame but  
edge merger on 3  
sides. Soft focus  
Over exposed on  
petals & under  
exposed on center

#4

Good rule of thirds  
Too much negative  
space- doesn't fill  
frame  
Muted colors  
pixelated



# 2021 State Fair Photography Judging

## Class 5 Farm Animals



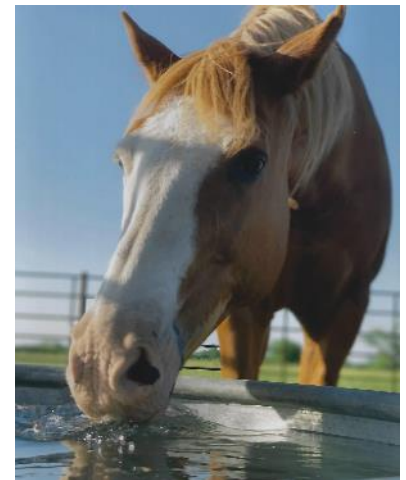
1



2



3



4

Select class

- Class 1 – Mountains
- Class 2 – Rocks
- Class 3 – Children
- Class 4 – Sunflowers
- Class 5 – Farm Animals
- Class 6 – Black & White
- Intermediate Problem
- Senior Problem

Place this class of four photos in order of best to worst. Click on a photo for a full screen view, click on the large image to return to this page. Write your placing down on paper then **click the button to see official placing and reasons**



MSU 4-H  
25671









# Class 5 – Farm Animals

Placing 4 – 3 – 2 – 1 .

v v v

Cuts 2 3 6 .



#4

Good focus on eye  
Good composition  
Nice color  
Nice catch of action of water  
Ear merger

#3

Shallow depth of field  
Good catch light in eye  
Soft focus  
Distracting background

#2

Good focus on eye & ear  
Catch light in eye  
Slight pixilation  
Too centered  
Distracting background

#1

Good rule of thirds  
Edge merger of ears  
Too shallow depth of field

# 2021 State Fair Photography Judging

## Class 6 Black & White



1



2



3



4

Select class

- Class 1 – Mountains
- Class 2 – Rocks
- Class 3 – Children
- Class 4 – Sunflowers
- Class 5 – Farm Animals
- Class 6 – Black & White
- Intermediate Problem
- Senior Problem

Place this class of four photos in order of best to worst. Click on a photo for a full screen view, click on the large image to return to this page. Write your placing down on paper then **click the button to see official placing and reasons**











# Class 6 – Black & White

Placing 2 – 3 – 4 – 1 .

v v v

Cuts 2 6 2 .



#2

Good contrast  
Good shading of  
grays  
Good black & whites  
Good focus  
Fills the frame

#3

Good rule of thirds  
Good focus  
Good contrast-black &  
whites  
Lots of shades of gray  
Lacks strong focal point

#4

Nice angle &  
perspective  
Burn out (hot spots) on  
column  
Loss of definition on  
sides  
Soft focus

#1

Good focus  
Good depth of field  
Too much negative  
space  
Overexposed upper  
right corner

# 2021 State Fair Photography Judging Intermediate Problem



1



2



3



4

Select class

Class 1 – Mountains

Class 2 – Rocks

Class 3 – Children

Class 4 – Sunflowers

Class 5 – Farm Animals

Class 6 – Black & White

Intermediate Problem

Senior Problem

Please select the best photo to match the term below

A. Patterns B. Texture C. Role of thirds D. Fill the frame

Click on a photo for a full screen view, click on the large image to return to this page. Write your placing down on paper then **click the button to see official placing and reasons**











# Intermediate Problem

Placing 3 – 2 – 1 – 4 .

1 correct = 13 points

2 correct = 25 points

4 correct = 50 points



#3  
Patterns

#2  
Texture

#1  
Rule of thirds

#4  
Fills the frame

# 2021 State Fair Photography Judging

## Senior Problem



1



2



3



4



5

Select class

Class 1 – Mountains

Class 2 – Rocks

Class 3 – Children

Class 4 – Sunflowers

Class 5 – Farm Animals

Class 6 – Black & White

Intermediate Problem

Senior Problem

Please select the best photo to match the camera settings  
below

A. Medium telephoto B. Macro C. Wide angle D. short telephoto

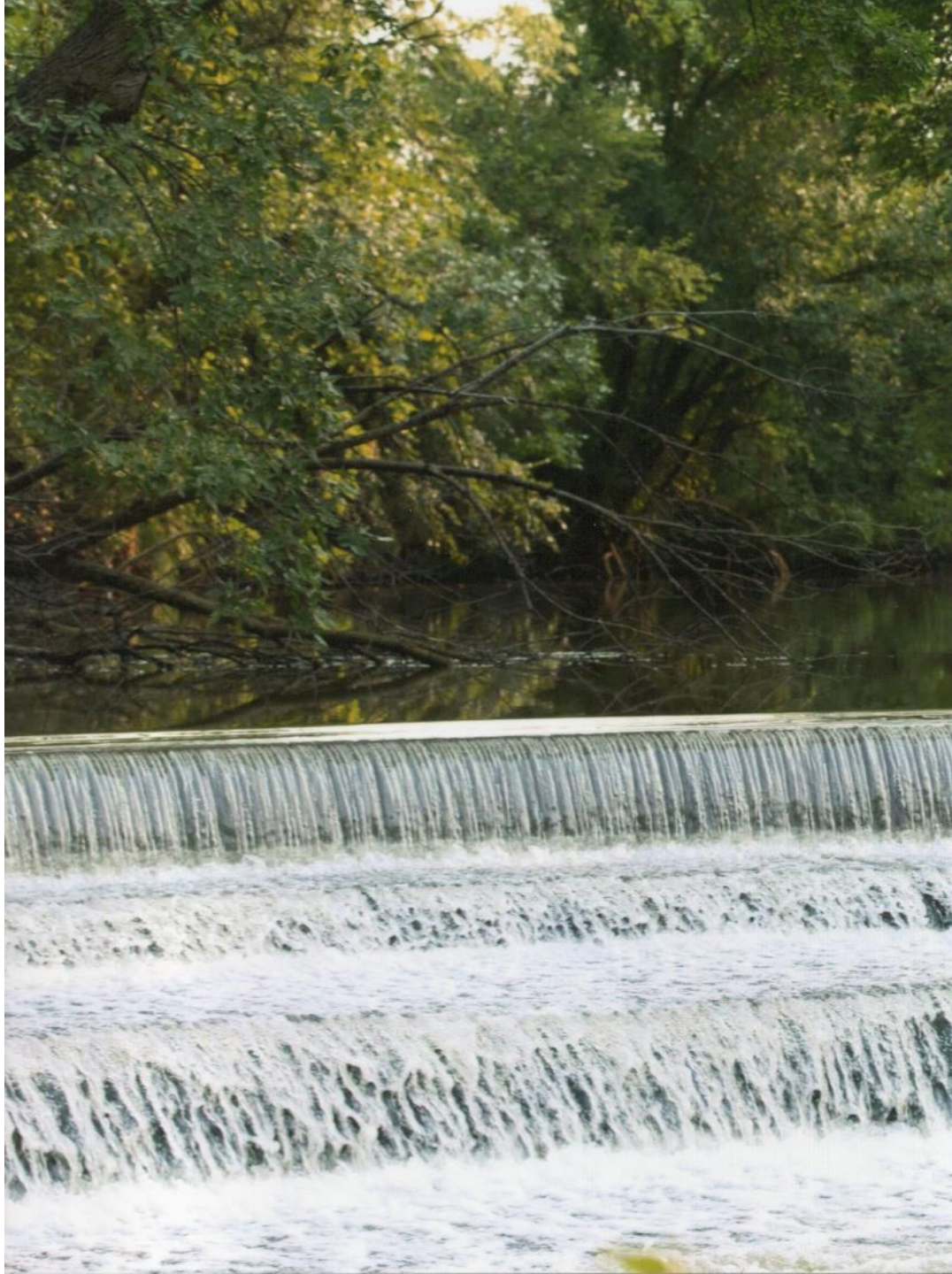
Click on a photo for a full screen view, click on the large image  
to return to this page. Write your placing down on paper then  
**click the button to see official placing and reasons**













# Senior Problem

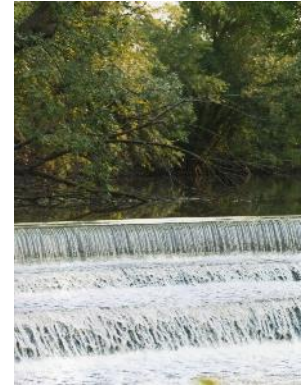
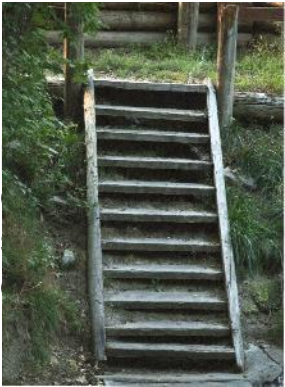
Placing 3 – 2 – 4 – 5 .

1 correct = 13 points

2 correct = 25 points

3 correct = 38 points

4 correct = 50 points



#3

Medium telephoto-  
flattens the depth of a  
picture, steps look like  
they are on top of  
each other

#2

Macro – allows you to  
focus within inches of  
objects.

#4

Wide angle distorts  
the image. Notice the  
dog's heads appear  
larger than their  
bodies.

#5

Short telephoto – less  
depth of field so each  
level of the fall look  
very close together.